

Profile Use

Installation

The profile needs to be installed. This can be done most simply by right clicking on the profile file, after unzipping, and selecting 'Install'. This will copy the file to the appropriate location depending on your operating system.

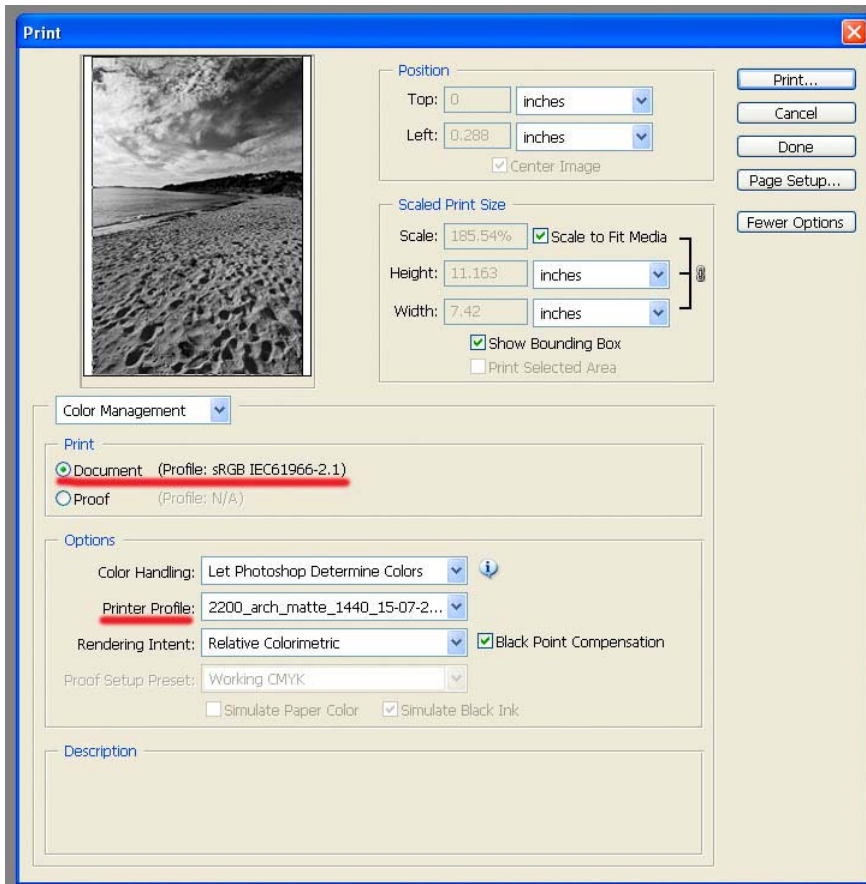


For WinXP this is

C:\WINDOWS\SYSTEM32\SPOOL\DRIVERS\COLOR

Printing the Image

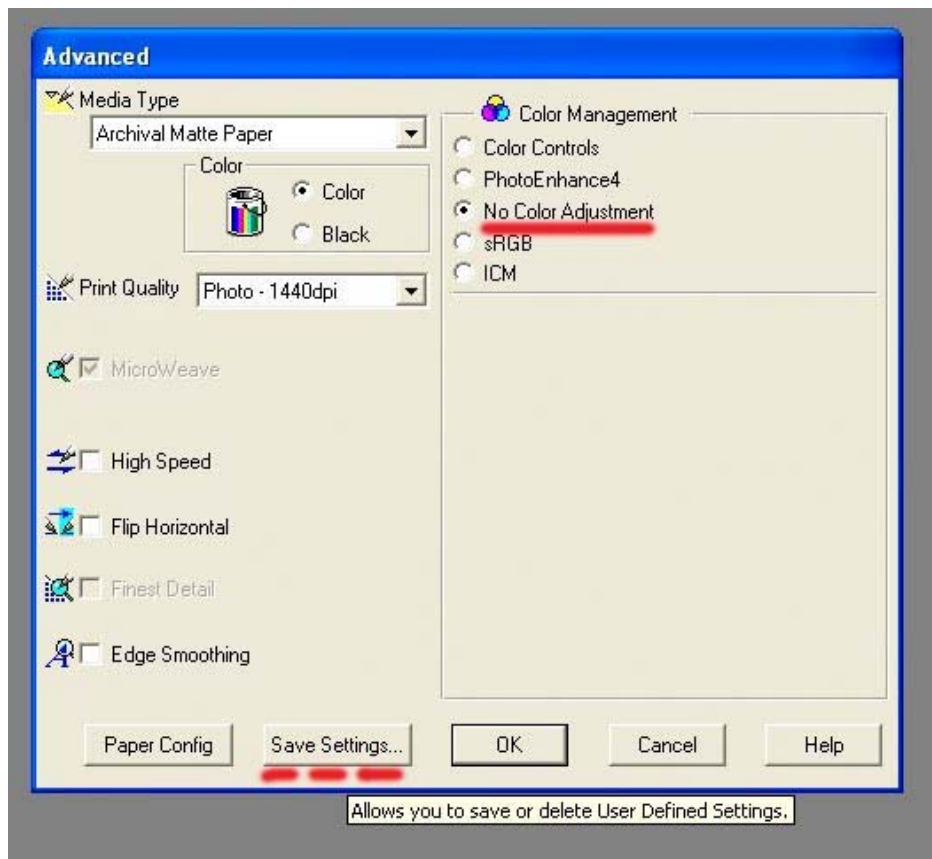
Choose the 'Print with Preview' command within Photoshop.



It is important that you choose your custom profile from the drop down list adjacent to 'Printer Profile'.

I recommend either Relative Colormetric or Perceptual rendering intent dependant on the image. You may feel it appropriate to use Photoshop's softproofing facility to help choose the best rendering intent.

You now also need to remember to use the custom printer settings defined when the calibration chart was first printed out.



Evaluating the Print

Remember that inkjet prints can take upto 24 hours to dry completely and for the colours to stabilize. Most profiles are designed to emulate D50 or D65 light so take the lighting conditions into account when evaluating prints.